

PART OF THE N.W. 1/4, SEC. 34, T.7N., R.1W., S.L.B. & M.
GREYSTONE ESTATES SUBDIVISION - PHASE 4

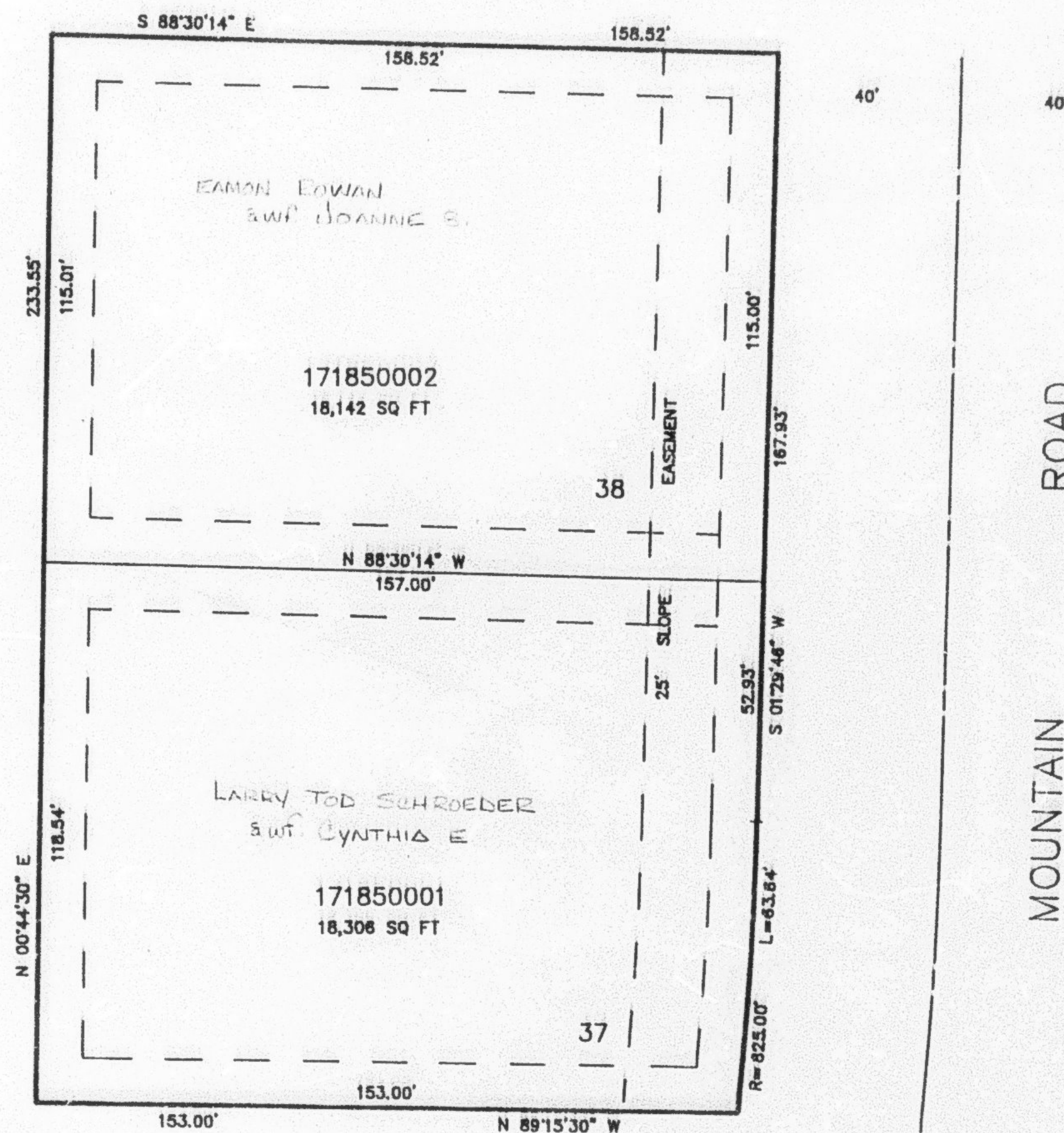
185

TAXING UNIT: 10

IN NORTH OGDEN CITY

SCALE 1" = 30'

SEE PAGE 82-4



SEE PAGE 82-4

SEE PAGE 82-4

SEE PAGE 82-4

10' UTILITY & DRAINAGE EASEMENTS EACH
SIDE OF PROPERTY LINES AS INDICATED
BY DASHED LINES EXCEPT AS OTHERWISE
SHOWN.

FOR COMPLETE ENG DATA SEE
ORIGINAL DEDICATION PLAT IN
BOOK 35, PAGE 7 OF RECORDS.